

TENDER PINK

PASSION FOR AESTHETICS



Tender Pink is the most innovative system to reproduce the gingival tissue in dental office and laboratory.

4 shades: Pink Dark, Pink Light, Pink Orange, Pink Transparent.

The chromatic effect can be enhanced by use of Stain Flow Blue, White, Red and Violet that can be also mixed between them.

Stain Flow



Pink Transparent



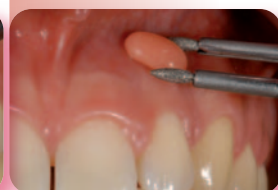
Pink Light



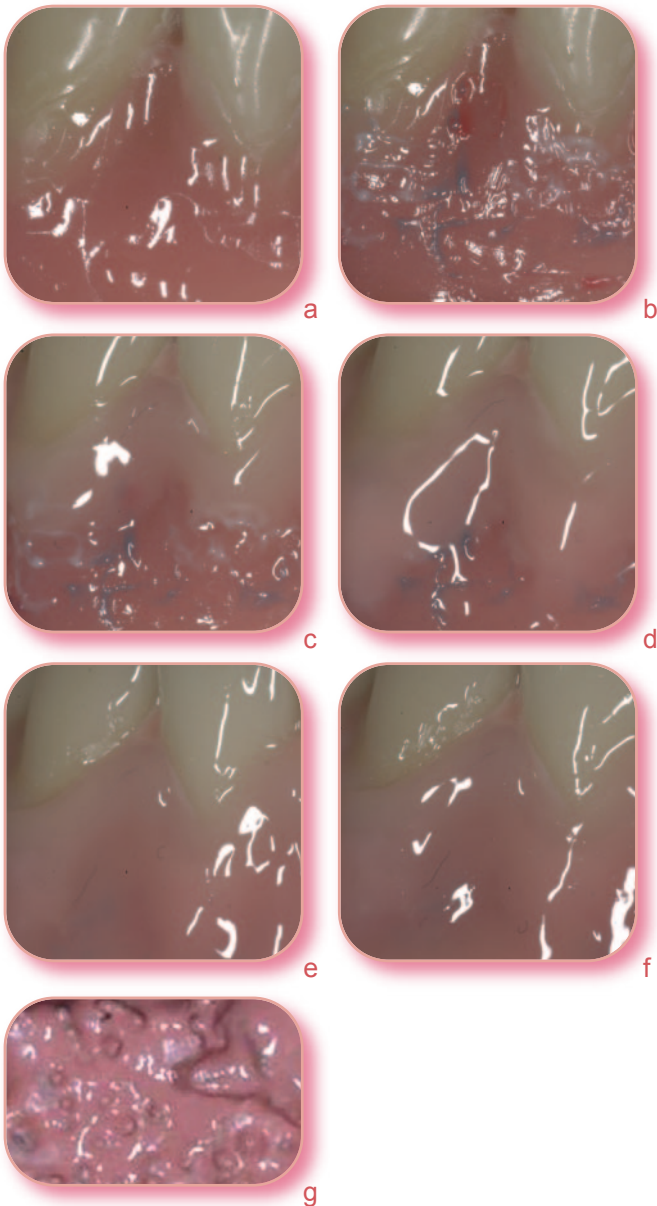
Pink Dark



Pink Orange



Gum characterization in removable and implant prosthesis



- Temp Bonding Fluid allows the adhesion of methyl methacrylate resin to light curing composite.
- Stain Flow **White** increases the opacity and shade of **ischemic papilla** or in bone prominence area, Stain Flow **Red** increases the chromaticity of pink composite, **simulating veins**, Stain Flow **Blue** increases effects in **foramen** and **small veins**. New Stain Flow **Violet** is ideal for reproduction of veins in deep gingival and can increase the chromaticity of Tender **Dark** composite, by mixing them together.
- Tender Pink **Transparent** reproduces the **cervical area** where the gum cover the tooth and not the bone. In combination with White or Red Stain is used to reproduce the frenum shade that differs from gingival shades.
- Tender Pink **Light** reproduces the area over the **root** where the gum is tight and transparent.
- Tender Pink **Dark** reproduces area of the gum less thigh and less adherent to the bone, **highly blood supplied** with a red blue shade in the area of the foramen. In combination with Stain Blue and Red the colour of the veins of the natural gum can be enhanced.
- Tender Pink **Orange** (available also as **Flow**) is used as first layer or combined with Stain Flow White reproduces the typical colour of **bone prominence of natural flanges**.
- Tender Pink **Opaque**, that contains also the primer, is used to mask the metal structure.

Tender Pink

The system for gum creation and characterization

Shield

ETOP Self Adhesive Pink Opaque

Shades for gum characterization

COSSTAIN1N WHITE stain refill

COSSTAIN3N BLUE stain refill

COSSTAINR RED stain refill

COSSTAINV VIOLET stain refill

Tender Pink composite with low wear

ETP Tender Pink Orange

ETPL Tender Pink Light

ETPD Tender Pink Dark

ETPT Tender Pink Transparent

Tender Pink flow with low wear

ETFP Tender Pink Orange Flow



TENDERPKIT Tender Pink Kit

- 1 Tender Pink Opaque
- 3 Stain Flow (blue, red, white)
- 4 Tender Pink Shades: Orange - Light - Dark - Transparent

ETPK Tender Pink Kit

- 4 Tender Pink Shades: Orange - Light - Dark - Transparent

Adhesion methyl methacrylate resin to composite

TEMPF Temp Bonding Fluid

Adhesion ceramic to composite

ETBOND Tender Bonding

ETOCLEAR Tender Paste Opaque Clear