

# ENA FLOW SEALANT "BIO"

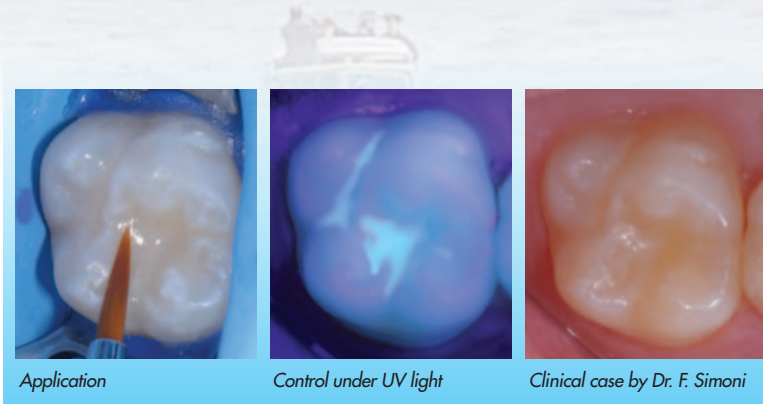
## Pit & Fissure Sealant

### Light curing fluid sealant

Fluorescent for a better control under UV light

Good wear resistance

- Natural tooth surface sealant
- Composite restoration margin sealant
- BIS-GMA free



Application

Control under UV light

Clinical case by Dr. F. Simoni



Ref	Description	Q.ty
EHFS	ENA FLOW SEALANT Pit & Fissure Sealant Disposable tips 0,8 mm	2 g 3 pcs

# ENA STAIN

## Fluorescent Composite Stains

Unique fluorescent stains used for characterization in both the dental practice and laboratory. Due to high fluorescence, they naturally integrate with the natural tooth. Stains can be used alone or mixed with the composite without changing its fluorescent characteristics.



EHF1S

Ref	Description	Q.ty
EHF1S	ENA STAIN KIT Fluorescent stains in syringe: white, yellow, orange, blue, brown, dark brown Brushes (2 type C - 2 type F - 2 type M)	6x2g 6 pcs
EHF1N	White stain refill	2 g
EHF3N	Blue stain refill	2 g
EHF4N	Brown stain refill	2 g
EHF5N	Dark brown stain refill	2 g
EHF6N	Black stain refill	2 g
EHF7N	Yellow stain refill	2 g
EHF8N	Orange stain refill	2 g
ETST	Transparent stain refill	2 g