

BIS-GMA FREE VERSION  
**BPA  
FREE**  
DOES NOT CONTAIN BISPHENOL A

# ENA HRi BIO FUNCTION

New composite with unique characteristics

- > Biocompatible
- > Similar abrasion to natural enamel
- > Ideal handling, sculptibility and polishability



# ENA FLOW SEALANT BIO

For natural tooth and composite restoration margin sealing

- > Fluorescent for a better control under UV light
- > Good wear resistance



## Highly Biocompatible Composite for Anteriors and Posteriors Composite system for direct and indirect technique, with mechanical and functional characteristics similar to natural enamel

### CHARACTERISTICS

- Highly Biocompatible, does not contain Co-monomers nor Bis-GMA
- Similar abrasion to natural enamel
- Mechanical and functional characteristics similar to gold
- Ideal polishability and high gloss retention over time
- Ideal handling: it does not stick to the instrument
- Excellent sculptibility
- Suitable for direct and indirect technique
- High Radiopacity
- Contains Fluoride

3 enamel and 9 dentin shades are available:

- **BF1** low value, **BF2** medium value, **BF3** high value
- **BD0 - BD0,5 - BD1 - BD2 - BD3 - BD3,5 - BD4 - BD5 - BD6**

Completely biocompatible to guarantee a perfect integration in harmony with the human body without releasing any toxic substances. High stability resin matrix and absence of nanoparticles in the powders generated by abrasion phenomenon that could be absorbed by the body. The UDMA and TCDDMDMA innovative formula is Bis-GMA free, a monomer that can liberate Bisphenol-A (BPA), an organic compound that exhibits estrogenic properties in human body causing health problems.

### ABRASION

	Depth (mm)	Volume (mm <sup>3</sup> )
<b>Natural enamel</b>	<b>0.216</b> (0.070)	<b>0.404</b> (0.200)
Gold type III	0.219 (0.060)	0.328 (0.140)
Composite F* (enamel) light cured with Laborlux**	0.459 (0.068)	1.017 (0.239)
Composite F* (enamel) light cured with Led	0.464 (0.069)	0.972 (0.247)
<b>Ena HRi Bio Function</b> light cured with Led	<b>0.252</b> (0.059)	<b>0.454</b> (0.057)
<b>Ena HRi Bio Function</b> light cured with Laborlux**	<b>0.212</b> (0.052)	<b>0.375</b> (0.052)

\* reference composite chosen after identified as the best among the ones tested during the preliminary phase

\*\* curing unit for laboratory; it cures with heat (70°-80°C / 158°-176°F)

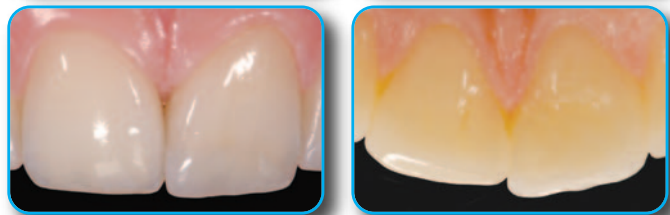
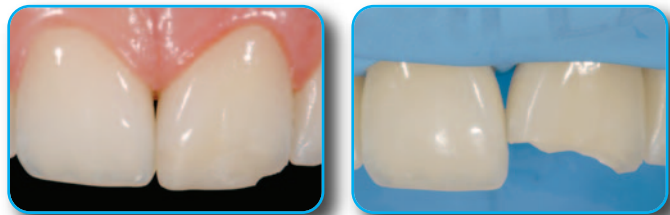
Initial case before rehabilitation



Final case after rehabilitation with direct technique in lower sector and indirect technique in upper sector



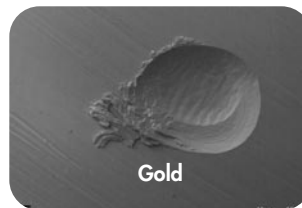
Direct composite restoration with dentin and enamel Ena HRi Bio Function



Clinical cases of Dr. Lorenzo Vanini

### WEAR SURFACES

after 120.000 cycles by two-body wear test in a dual axis chewing simulator (University of Chieti - Prof. Camillo D'Arcangelo)



50x SEM images. The abrasion of Ena HRi Bio Function is similar to gold and therefore to the natural enamel.

### PHYSICAL DATA

	MPa
Vickers Hardness	685
Flexural Strength	150
Modulus of elasticity	11.600
Compressive Strength	460

Physical data maintained till 4 mm of depth with LED light curing unit (minimum power 1000 mW)

# ENA HRi BIO FUNCTION



EHR12



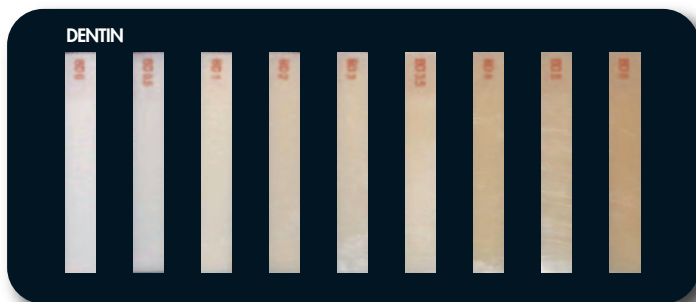
EHR6BB



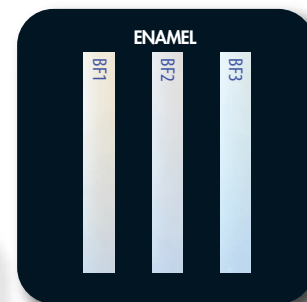
ER3FB



Ref	Description	Q.ty
EHR12	<b>ENA HRi BIO FUNCTION Complete Kit</b> including 12 syringes 5 g with holder 9 dentin: BD0, BDO,5, BD1 (A1), BD2 (A2), BD3 (A3), BD3,5 (A3,5), BD4 (A4), BD5, BD6 3 enamel: BF1, BF2, BF3	12x5 g
EHR6BB	<b>ENA HRi BIO FUNCTION Trial Kit</b> including 6 syringes 2,5 g with holder 4 dentin: BD1 (A1), BD2 (A2), BD3 (A3), BD4 (A4) 2 enamel: BF2,BF3	6x2,5 g
ER3FB	<b>ENA HRi BIO FUNCTION Trial Kit</b> including 3 syringes 2,5 g 3 enamel: BF1, BF2, BF3	3x2,5 g
EHR12T	<b>ENA HRi BIO FUNCTION Complete Kit</b> including 72 tips (6 tips x 12 shades) 9 dentin: BD0, BDO,5, BD1 (A1), BD2 (A2), BD3 (A3), BD3,5 (A3,5), BD4 (A4), BD5, BD6 3 enamel: BF1, BF2, BF3	12x6 pcs
EHR6BBT	<b>ENA HRi BIO FUNCTION Trial Kit</b> including 36 tips (6 tips x 6 shades) 4 dentin: BD1 (A1), BD2 (A2), BD3 (A3), BD4 (A4) 2 enamel: BF2,BF3	6x6 pcs
CSG12	<b>ENA HRi BIO FUNCTION Shade guide</b> entirely made in composite; wedge-shaped to facilitate the chromatic effect verification of different thicknesses	12 shades



- **Dentin** with fluorescence and increased translucency calibrated to natural dentin (corresponding to A Vita shades)
- **Ultra-light dentins:** BD0 and BDO,5 for bleached teeth
- **Ultra-dark dentins:** BD5 and BD6 for cervical area and stratification technique



- **Bio Function enamel**
- **BF1** low value
- **BF2** medium value
- **BF3** high value

DENTIN

ENAMEL

# ENA HRi BIO FUNCTION REFILL



Ref	Description	Syringes
EHRBF1	Ena HRi Bio Function enamel BF1	5 g
EHRBF2	Ena HRi Bio Function enamel BF2	5 g
EHRBF3	Ena HRi Bio Function enamel BF3	5 g
EHRBDO	Ena HRi Bio Function dentin BDO	5 g
EHRBDO,5	Ena HRi Bio Function dentin BDO,5	5 g
EHRBD1	Ena HRi Bio Function dentin BD1 (A1)	5 g
EHRBD2	Ena HRi Bio Function dentin BD2 (A2)	5 g
EHRBD3	Ena HRi Bio Function dentin BD3 (A3)	5 g
EHRBD3,5	Ena HRi Bio Function dentin BD3,5 (A3,5)	5 g
EHRBD4	Ena HRi Bio Function dentin BD4 (A4)	5 g
EHRBD5	Ena HRi Bio Function dentin BD5	5 g
EHRBD6	Ena HRi Bio Function dentin BD6	5 g

Ref	Description	Tips
EHRTBF1	Ena HRi Bio Function enamel BF1	12x0,3 g
EHRTBF2	Ena HRi Bio Function enamel BF2	12x0,3 g
EHRTBF3	Ena HRi Bio Function enamel BF3	12x0,3 g
EHRTBDO	Ena HRi Bio Function dentin BDO	12x0,3 g
EHRTBDO,5	Ena HRi Bio Function dentin BDO,5	12x0,3 g
EHRTBD1	Ena HRi Bio Function dentin BD1 (A1)	12x0,3 g
EHRTBD2	Ena HRi Bio Function dentin BD2 (A2)	12x0,3 g
EHRTBD3	Ena HRi Bio Function dentin BD3 (A3)	12x0,3 g
EHRTBD3,5	Ena HRi Bio Function dentin BD3,5 (A3,5)	12x0,3 g
EHRTBD4	Ena HRi Bio Function dentin BD4 (A4)	12x0,3 g
EHRTBD5	Ena HRi Bio Function dentin BD5	12x0,3 g
EHRTBD6	Ena HRi Bio Function dentin BD6	12x0,3 g



**Autoclavable syringe for tips**  
Facilitates the extrusion of composite.



COSMTS

Ref	Description	Q.ty
COSMTS	Syringe for tips	1 pc

## SYRINGE FOR TIPS