

HRi

Like
NATURE
does it !

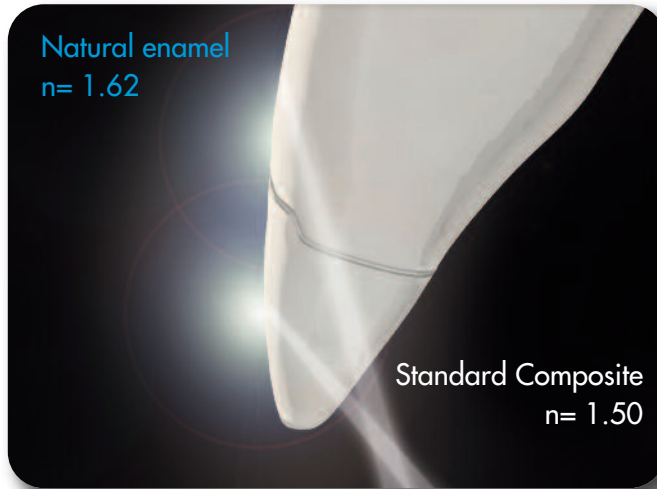


* Ena HRi has the same light refractive index as natural enamel (1.62). Beware of imitators!

estetica
M
GRUPPO
MICERIUM

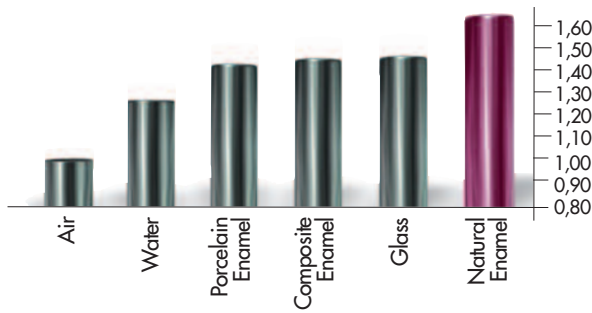
THE PROBLEM

The refraction of composite & ceramic materials



“Glass Effect” lowers the value of the restoration with a gray halo on the margin (dark line)

RELATIVE REFRACTIVE INDEX OF LIGHT (n)



The relative refractive indexes of common materials measured at a temperature of 20°C and with a 589 nm wavelength light indicates the deviation of the light that crosses a translucent area (Vanini Mangani Klimovskaia “Conservative Restoration of Anterior Teeth” Acme 2005)

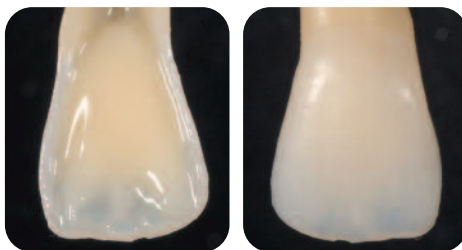
HRi: THE TRUE ENAMEL



HRi Enamel veneers showing natural effects

Different thicknesses of Ena HRi change in shade in the same manner as Natural Enamel would in the same thickness.

Thickness of 0,6 mm allows ideal translucency



Application of dentin and opalescent OBN



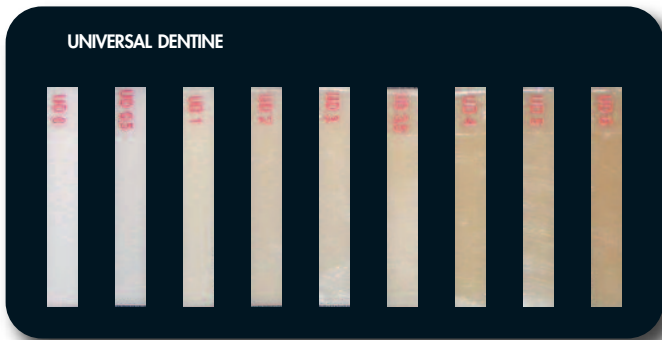
UE1 low value (amber)

UE2 medium value

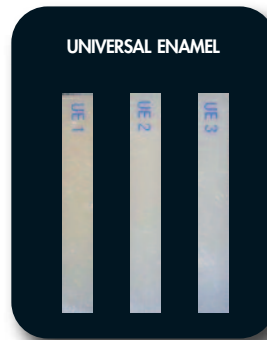
UE3 high value (for children or bleached teeth)

Characteristics & advantages

TECHNOLOGICAL & OPERATING ADVANTAGES



- **New dentin** with fluorescence and increased translucency calibrated to natural dentin
- **Ultra-light Dentin:** UD0 and UD 0,5 for bleached teeth



- **Invisible margin thanks to high refraction index** no "glass effect" lowering the value of the restoration



- **Characterization and intensive effect** created by intensive enamel (IM, IWS, IW) and opalescent amber (OA)
- **Opalescent blue and amber effects created from HRi Enamel** (Transparency 30% until 0,8 mm); Opalescent shade OBN is used when an increase in the opalescent effect is required

ENAMEL ONLY TECHNIQUE USING ENA HRi UNIVERSAL ENAMEL (ALSO FOR DIASTEMA)



BASIC TECHNIQUE USING ENA HRi, DENTIN AND ENAMEL



MASTER TECHNIQUE ADDITIONAL SHADES FOR OPALESCENCE, INTENSIVE AND CHARACTERIZATION



The product

ENA HRi KIT



EHR15

**COMPLETE KIT
ENA HRi**
FOR MASTER TECHNIQUE
including 15 syringes 5 g
with syringe holder

9 dentin:
UD0, UD0,5, UD1 (A1),
UD2 (A2), UD3 (A3),
UD3,5 (A3,5), UD4 (A4),
UD5, UD6

3 universal enamel:
UE1, UE2, UE3

3 intensive enamel:
white (IW), white spot
(IWS), milky (IM)

2 opalescent enamel:
blue (OBN), amber (OA)
available separately (included in
special offers)



EHR11

**INTRO KIT
ENA HRi**
FOR MASTER TECHNIQUE
including 11 syringes 5 g
with syringe holder

7 dentin:
UD0, UD1 (A1), UD2 (A2),
UD3 (A3),
UD4 (A4), UD5, UD6

3 universal enamel:
UE1, UE2, UE3

1 intensive enamel:
intensive white spot (IWS)



EHR6*

**TRIAL KIT
ENA HRi**
FOR BASIC TECHNIQUE
including 6 syringes 2,5 g
with syringe holder

4 dentin:
UD1 (A1), UD2 (A2), UD3
(A3), UD4 (A4)

2 universal enamel:
UE2, UE3

***EHR6B**
UE1 instead of UE3



ET1H

**INTRODUCTORY KIT
ENA HRi**
FOR LABORATORY
with syringe holder, including:

7 Tender 2,5g: T2, T3, T4, T5,
MW, MO, MY
4 Dentin HRi 2,5g: UD2 (A2), UD3
(A3), UD4 (A4), UD5
3 Universal enamel HRi 2,5g:
UE1, UE2, UE3
1 Intensive enamel 2,5g:
Intensive White Spot (IWS)
1 Opalescent enamel 2,5g: OBN
2 Paste opaque 3g: light, clear
1 Tender bond metal primer 2,5ml
2 Temp Chips retentions 10g:
standard, micro
1 Temp Chips adhesive 20ml



All kits available also in tips

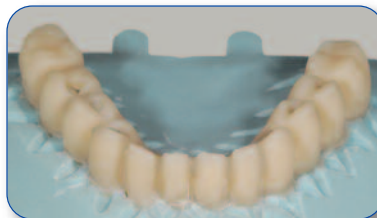
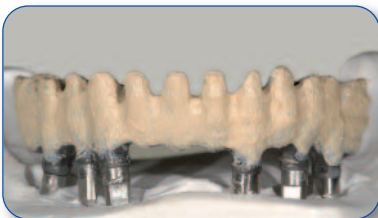
POSTERIOR DIRECT & INDIRECT



PROSTHESIS ON IMPLANTS



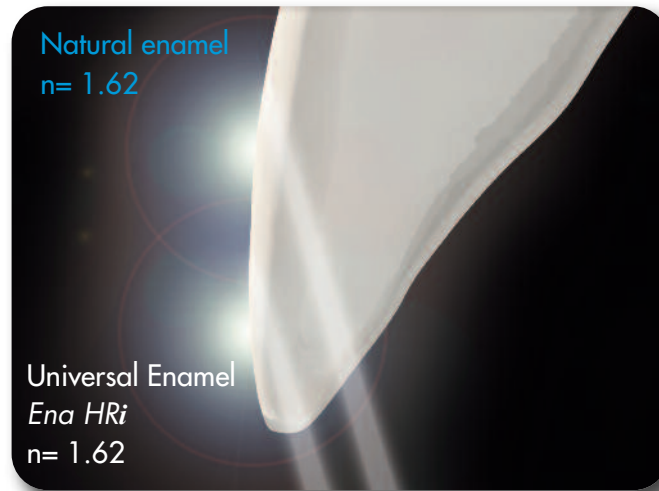
PRESSING TECHNIQUE WITH TENDER FLASK Laboratory case by Mr. D. Rondoni



THE SOLUTION

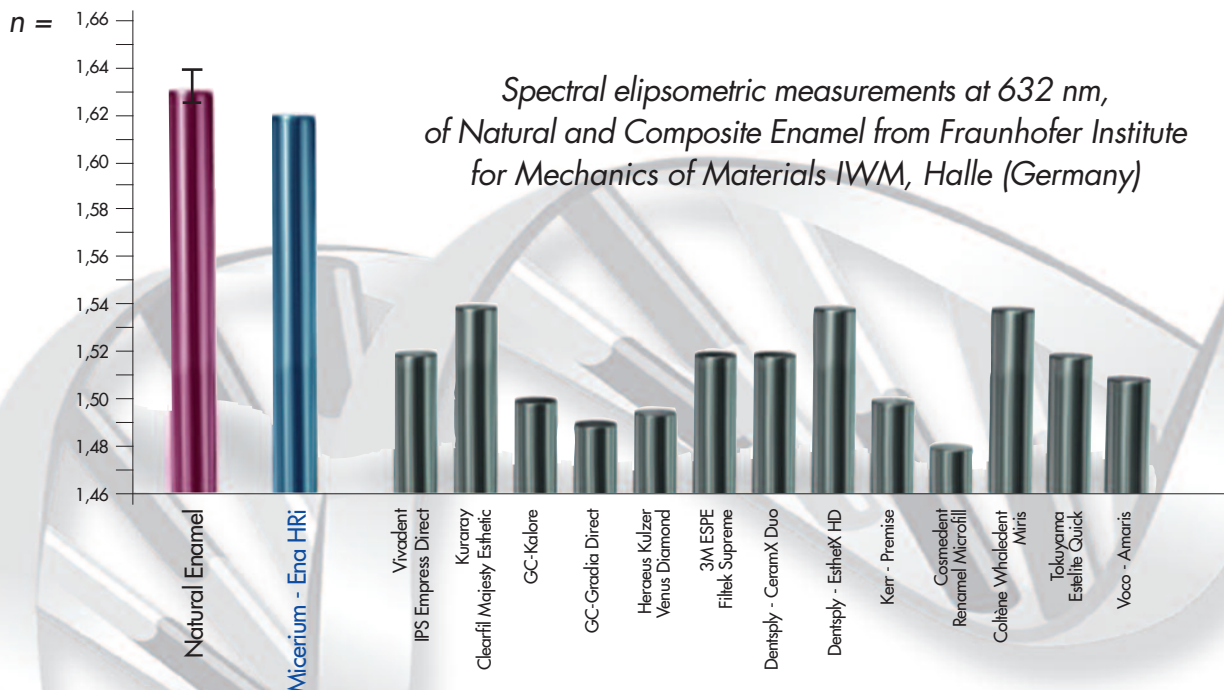
ENA  HRi

... the same refractive index as natural enamel

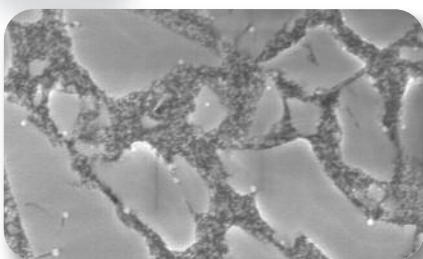


Invisible margins, in **HRi** restoration, using the same thickness of the natural enamel

RELATIVE REFRACTIVE INDEX



NANOTECHNOLOGY REM



Ena HRi doesn't contain TEGDMA and HEMA!

• Composition FILLING (80% WEIGHT - 63% VOLUME)

- Surface treated nano zirconium oxide with high refractive index (12% by weight)
- New type of filling glass with high refractive index (68% by weight)

• Ideal physical data

for every type of direct or indirect restoration

- Vickers Hardness 700 MPa
- Modulus of elasticity 14.500 MPa
- Flexural Strength 170 MPa
- Compressive strength 450 MPa
- High radiopacity 600% Al



The HRi project has been devised from Dr. L.Vanini and developed in collaboration with Dr. T. Niem (Patent Pending)

This project (HA-Project-Nr: 130/07-01) has received special funding from the State of Hessen, co-financed by funds of the European Union (European Social Fund - ESF) for scientific innovation and advancement.



ENA SHINY FINISHING SYSTEM



Finishing and polishing with diamond rubber point, diamond paste 3 μ and 1 μ with brushes, aluminium oxide with felt.

ENA HRi FLOW^{HF}



New highly filled fluid composite medium viscosity, available light curing as Flow^{HF} HRi (as liner) and dual as Ena Cem^{HF} (for multipurpose luting & core build up) and. Strong physical properties and "bubble-free" formulation.

ENA TEMP



Temporary Resin for esthetic temporary crown and bridge

The opacity and fluorescence of the dentin bodies, combined with the natural translucency of the enamel allows Ena Temp a harmonious relationship which perfectly matches the relationship of these layers within the natural tooth.

ENA HEAT



Composite Heater

ENA HEAT 110-240V 50-60 Hz, 500mA
Two settings heat composite to 39°C - ideal for sculpting, or 55°C – ideal for cementation

TENDER PINK



Pink Light Curing Composite

is the most innovative system to reproduce the gingival tissue in dental office and laboratory. **4 shades:** Dark, Light, Orange, Transparent
3 Stain Blue, White and Red,
1 Flow and **1 Opaque**

Micerium S.p.a.

Via G. Marconi, 83
16036 Avegno (GE) Italy
Tel. +39 0185 7887 880
Fax +39 0185 7887 970
hfo@micierium.it
www.enahri.com

